

LINEA SERIES

INSTALLATION INSTRUCTION



IP40	IK06	220-240V	5 YRS Warranty	28-49 WATTS	LOW GLARE	UGR <19
------	------	----------	-------------------	----------------	--------------	------------

Upon request

1-10V	DALI
-------	------

PHYSICAL

Body	Aluminum
Finish	White RAL9016/ Black RAL9005

OPTICAL

Diffuser	PC(Cover) / PMMA(Lens)
Light Emission	Symmetrical
Beam Angle	UP 110°, Down 75°

ELECTRICAL

Light source	LED
CRI	>80
CCT	3000K - 4000K - 5000K
Driver	Electronic included 50-60Hz 220-240VAC Non-Dimmable Driver 1-10V dimming or DALI on request
Ambient Temp.	-20°C ~ 45°C

PRODUCT RANGE

	Rated Power(W)	Light Emission	Lumen(lm)	Dimensions(mm)	Beam Angle
LINEA 1.1	28W	Direct	3600lm	L1204xW56xH75	75°
LINEA 1.2	40W	Direct/Indirect	5000lm	L1204xW56xH75	UP 110°, Down 75°
LINEA 1.3	35W	Direct	4600lm	L1504xW56xH75	75°
LINEA 1.4	49W	Direct/Indirect	6200lm	L1504xW56xH75	UP 110°, Down 75°

SURFACE MOUNTED INSTALLATION

1

2






3

4

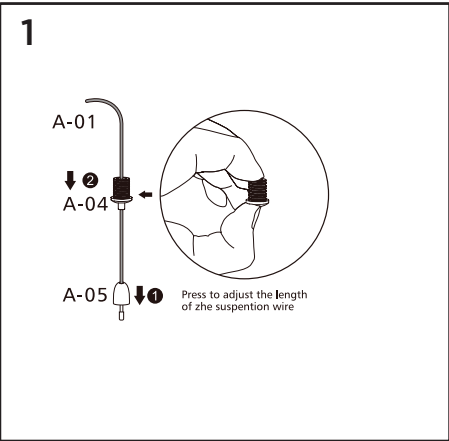
5

SUSPENDED WITHOUT CEILING PLATE INSTALLATION

ACCESSORIES

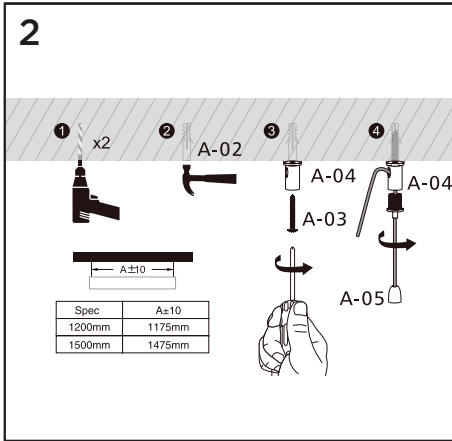
Code	A-01 	A-02 	A-03 	A-04 	A-05 
ACC	x2	x2	x2	x2	x2

1



A-01
A-04
A-05
Press to adjust the length of the suspension wire

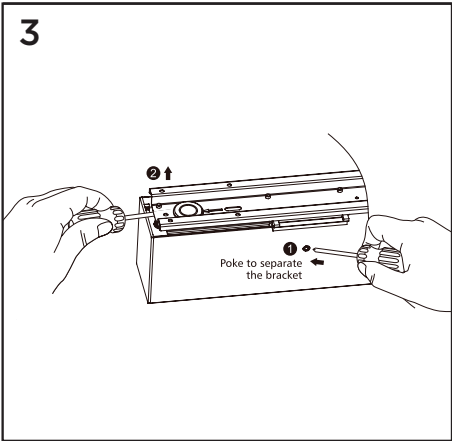
2



A-02
A-03
A-04
A-05

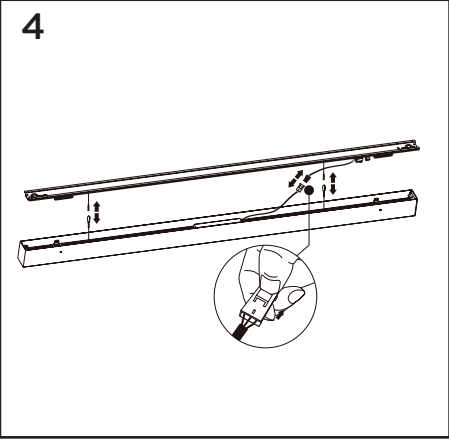
Spec	A±10
1200mm	1175mm
1500mm	1475mm

3



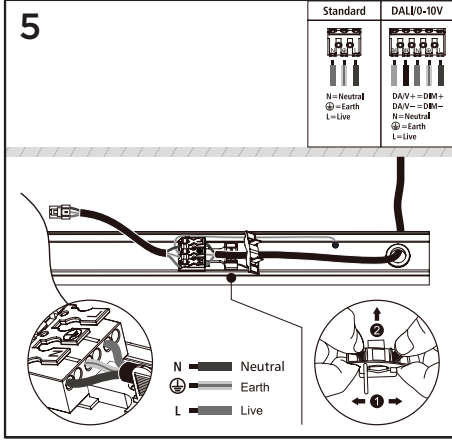
Poke to separate the bracket

4



A-04
A-05

5

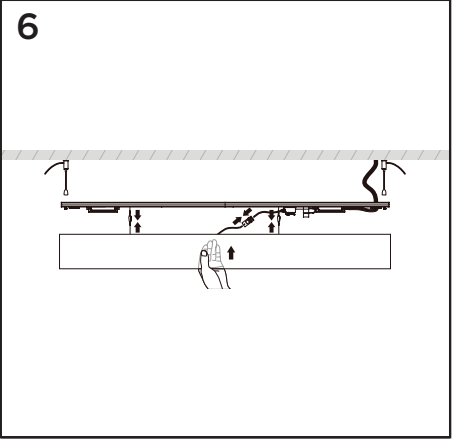


Standard
DALI 0-10V

Standard	DALI 0-10V
N = Neutral ⊕ = Earth L = Live	DA/V+ = DIM+ DA/V- = DIM- N = Neutral ⊕ = Earth L = Live

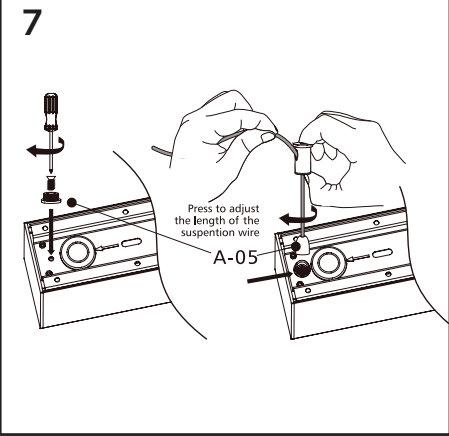
N Neutral
⊕ Earth
L Live

6



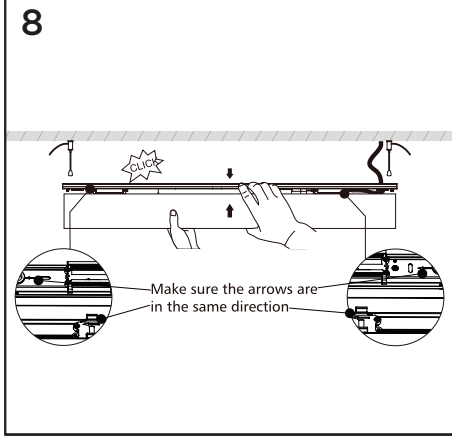
A-04
A-05

7



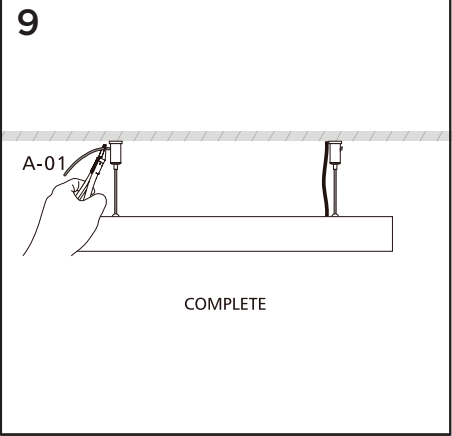
A-05
Press to adjust the length of the suspension wire

8



Make sure the arrows are in the same direction

9

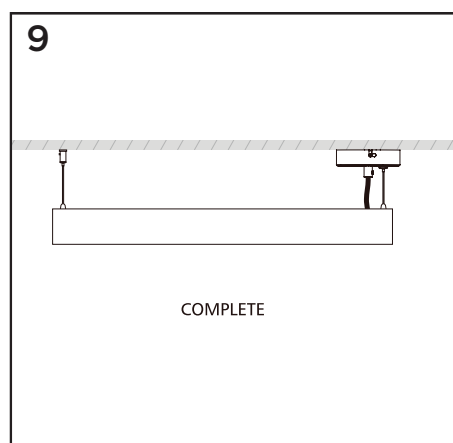
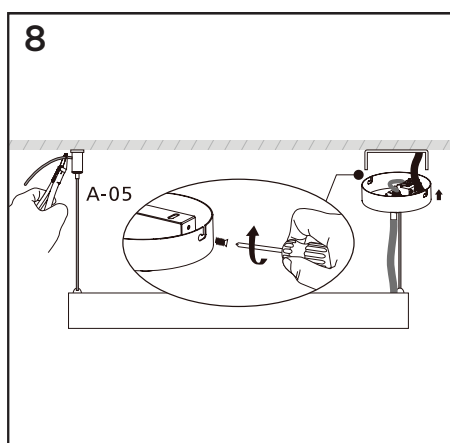
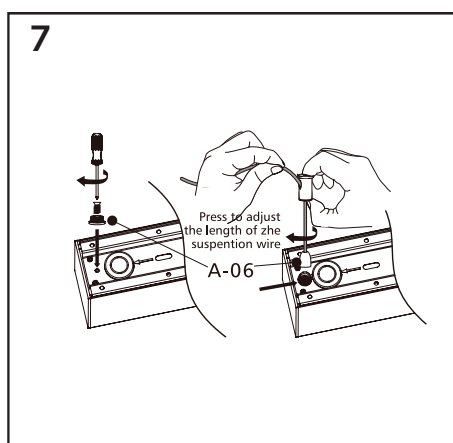
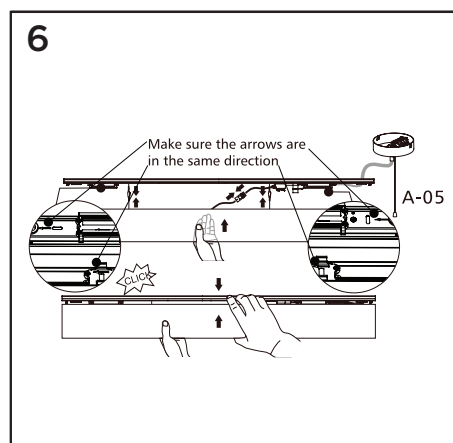
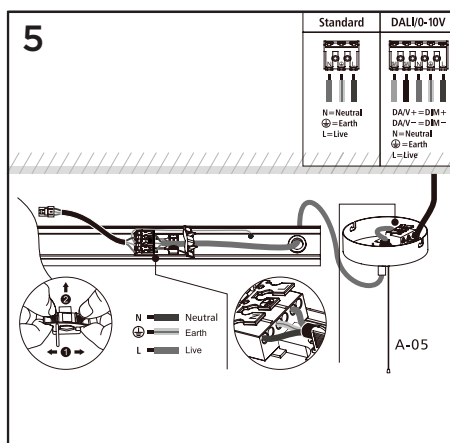
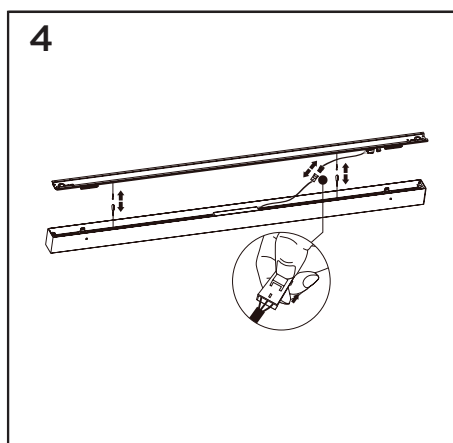
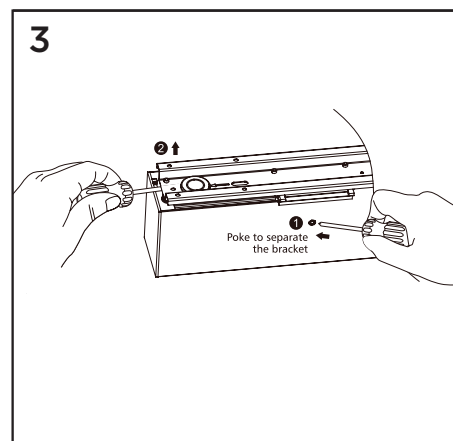
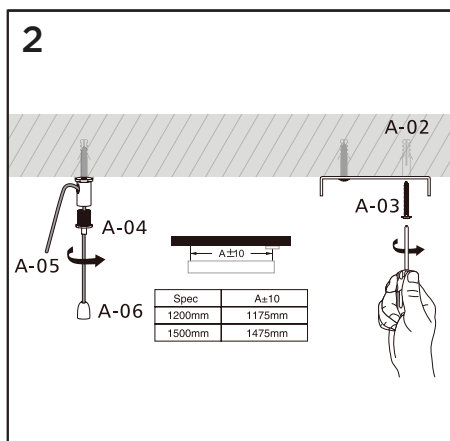
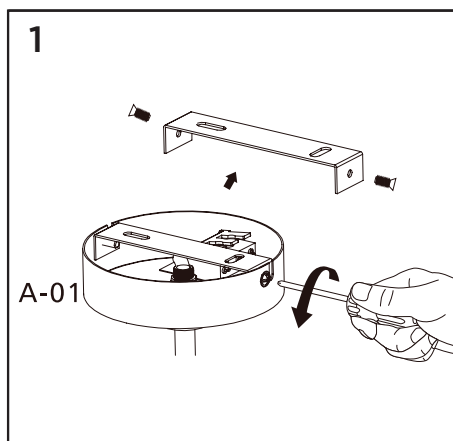


A-01
COMPLETE

SUSPENDED WITH CEILING PLATE INSTALLATION





ACCESSORIES

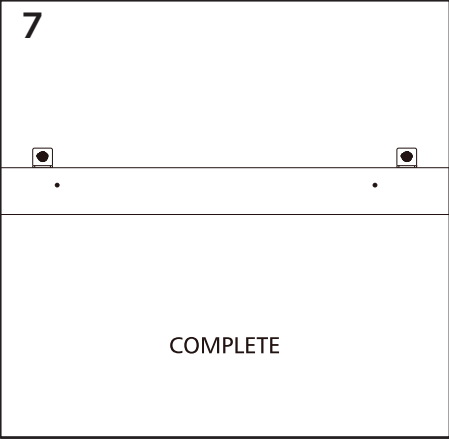
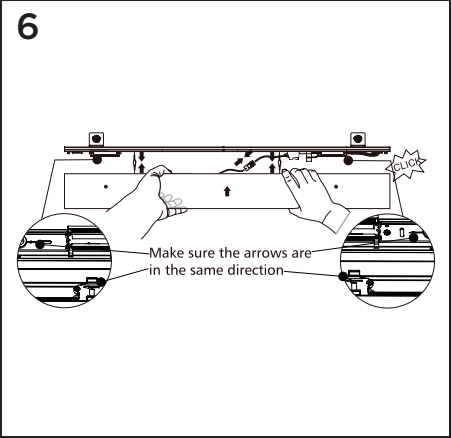
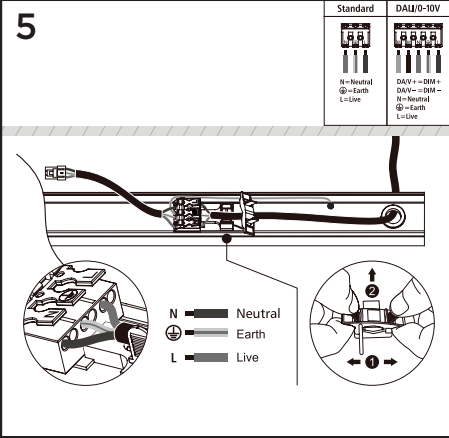
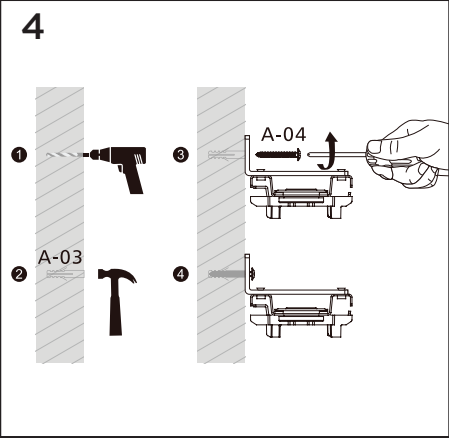
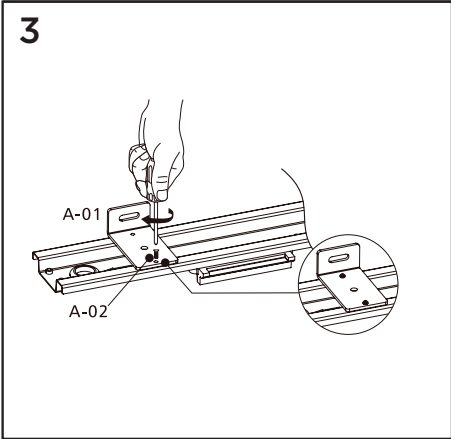
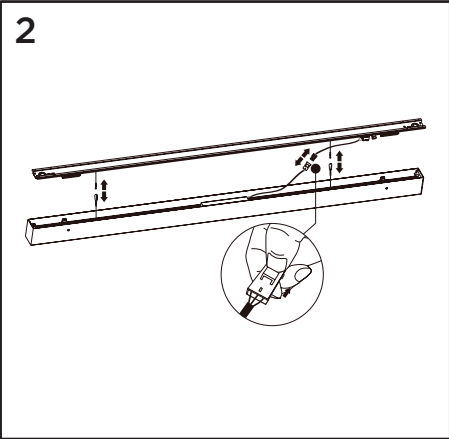
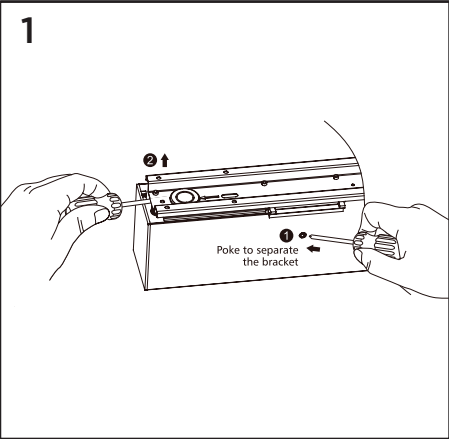
Code	A-01	A-02	A-03	A-04	A-05	A-06
ACC	x1	x3	x3	x2	x2	x2



WALL MOUNTED INSTALLATION

ACCESSORIES





Code	A-01 	A-02 	A-03 	A-04 
ACC	x2	x4	x2	x2

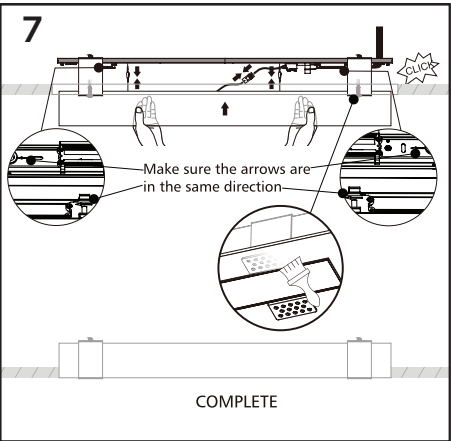
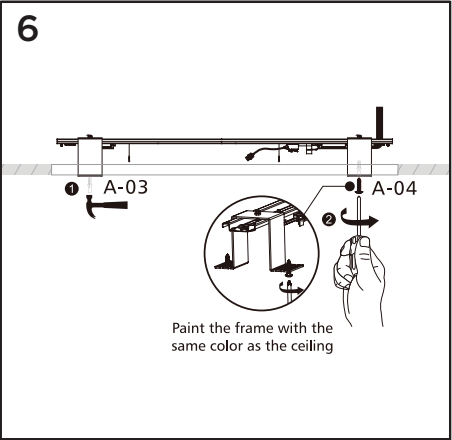
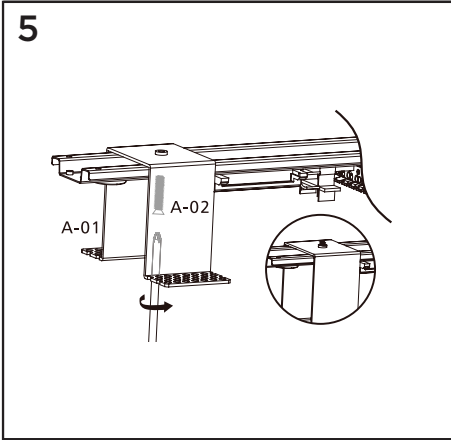
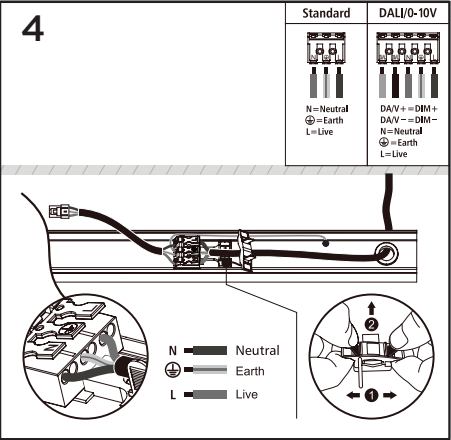
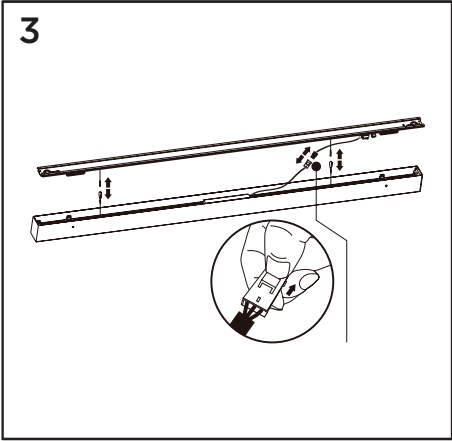
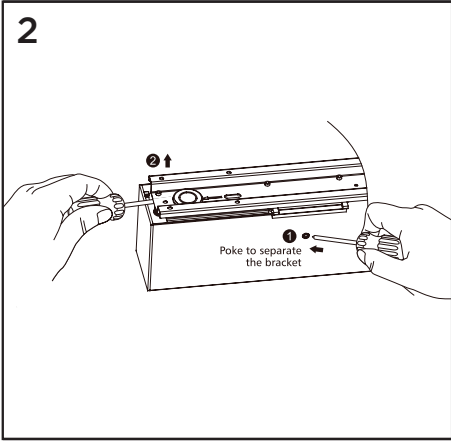
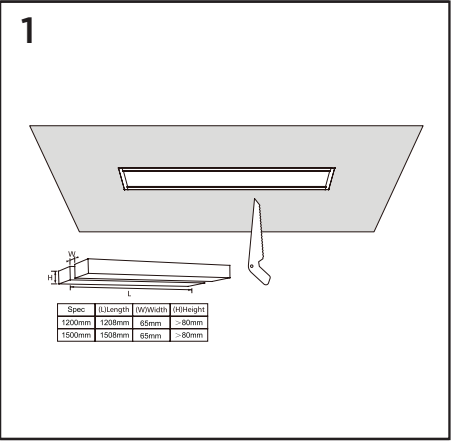


COMPLETE

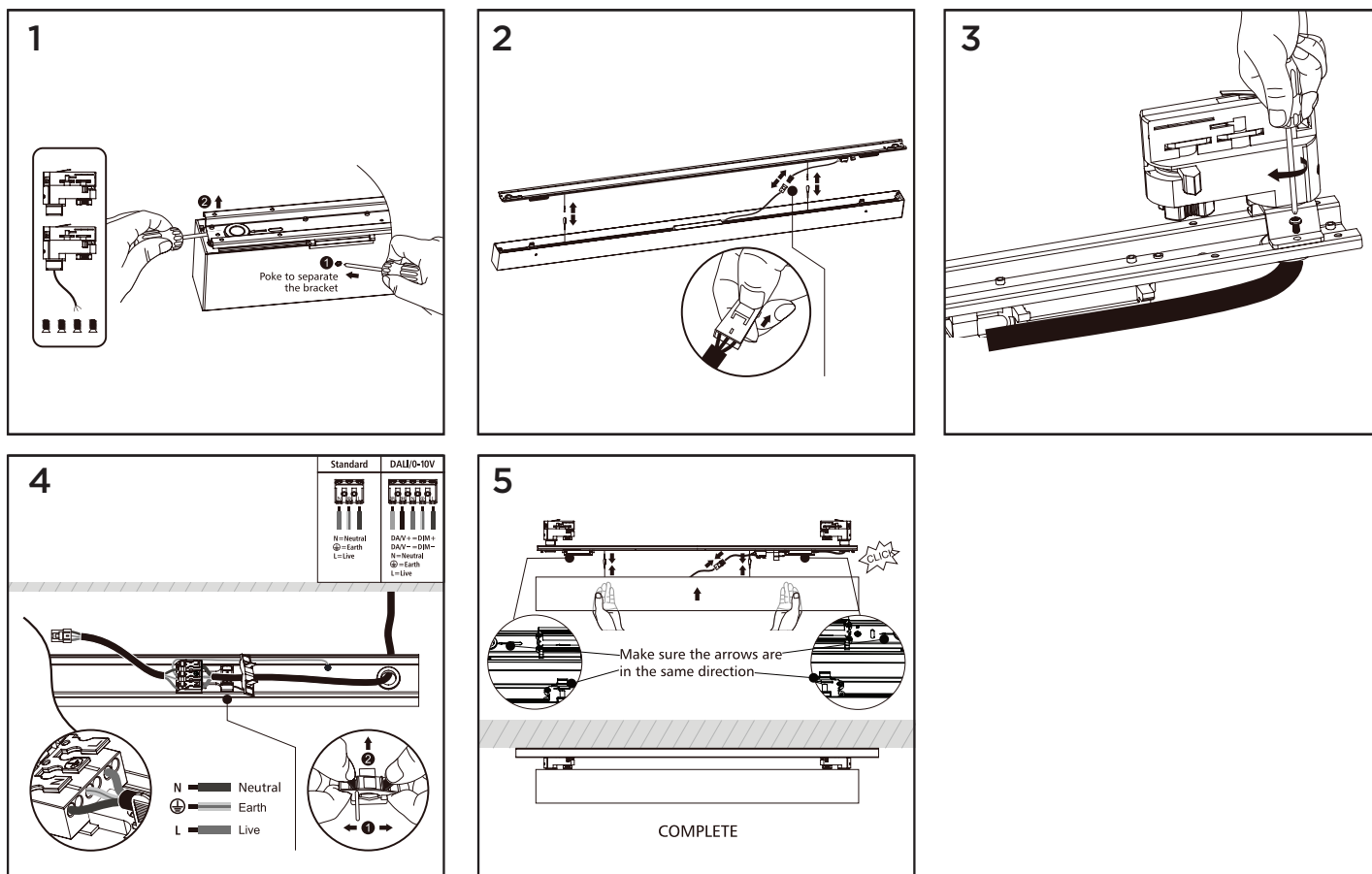
RECESSED INSTALLATION

ACCESSORIES

Code	A-01 	A-02 	A-03 	A-04 
ACC	x2	x2	x4	x4



TRACK INSTALLATION



SAFETY INSTRUCTIONS:

- Please read this instruction carefully before the commencement of installation and pass it on to the user of the equipment.
- The installation must be carried out by qualified personnel.
- Disconnect the main voltage, before starting the installation work.
- The light source of this luminaire is not replaceable when the light source reaches the end of its useful life, the entire luminaire is substituted.
- This fixture is not suitable for handheld use. It should be mounted in a fixed and safe place.
- Improper handling of the components or the luminaire itself could damage the correct function of this product, thus avoiding the manufacturer's warranty.
- Luminaire is suitable for indoor use.
- BEYOND LIGHTING FACTORY is not responsible for the improper use or modifications made to the product.
- In case the external flexible cable or cord of the fixture is damaged, to avoid danger it should only be replaced by the manufacturer or equivalent qualified personnel.
- For possible malfunctions, the defective products must be disassembled and delivered to the manufacturer company without any intervention. During the dismantling of the product, the cable insulation should not be damaged. Also, the cable should not be cut too close to the product. Enough cable should be left to take out the fixture.
- The report, which will be formed as a result of the tests to be made regarding the malfunction, will be shared with the customer, and if necessary, the product will be delivered back to the customer by eliminating the problems according to the warranty.